



REFLEX "SLIDE A SIDE" KIT



WORR - SPECIALISTS IN METALWORK

WORR STEEL AND ALLOY REFLEX KIT

FAST ACCESS

Available in both aluminium and steel, the Streamlink Reflex Kit offers the fastest possible side access to goods from a commercial vehicle. The sliding door system allows a fast closing and opening action, for those end users requiring side access quicker than can be provided by a curtain sider.

- **Smooth Door Action:** The 'sticking' often associated with the traditional 'hook' design used on these bodies, has been eliminated thanks to a patented double

bottom roller system, which ensures the upright cannot Twist. Durability is enhanced by the incorporation of a zintec steel bottom track. This itself has an in-built fork-lift bumper to protect the track assembly.

- **Weight Savings:** Reflex Kits incorporate high tensile aluminium doors at either end of the body ensuring weight savings and durability.
- **Reliable Curtains:** Kits are supplied with the STRUCTUREFLEX 'Reflex' curtains.

These are supplied with an efficient and durable external biasing system to ensure that the curtains always fold outwards.

EASE OF ASSEMBLY

As with all WORR kits, the Reflex kit has been developed with the body builder as well as the end user in mind. Features include a commonality of castings and parts across all kit types ensuring easy identification and supply of spares.



SPECIFICATION

ROOF

WORR 67mm Radiused Cantrail with Integral Track complete with Pelmet. Galvanised Steel curved Roof Sticks @ approx. 610mm C/Line Square Front corners. GRP or ALLOY Roof Skin Fully Assembled

BULKHEAD (FRONT OR REAR)

Special Composite Corner Pillars / Door Retainers using M/Steel RHS & 3mm Zintec External Caps 3mm Zintec Pressed Bottom Step. 14mm GRP Panel fitted using Avtainers @ approx. 200mm C/Line. 3mm Zintec Gussets to Bottom Step. 80 x 40 x 3mm RHSTop Rail

REAR FRAME

Special Composite Corner Pillars / Door Retainers using M/Steel RHS & 3mm Zintec External Caps 3mm Zintec Header Panel & Bottom Step 3mm Zintec Gussets to Header & Bottom Step Tail-Lift Type Rear Frames available on request. These are fitted with Sloping Rebated steps to allow Flush floor access with wheeled trolleys

SIDE RAVES/TRACK ASSY

3mm Zintec Pressings for Track & Track Angle (See Drawing)

ROOF SUPPORT SYSTEM

M/Steel Roof Support Channel. M/Steel RHS Roof Crossbrace Set of 8, 5mm M/Steel Roof Support Gussets

TENSIONERS

Over Centre Special Lockable 'T' locks

REAR CLOSURES

Double Doors (External or Recessed Locks), Alloy Roller Shutter, Wide Latt Shutter, Solid Rear or Lift up Flap on Gas Springs for use as closure with Cantilever Tail-Lift.

REFLEX COMPONENTS

Curtain Skins Fitted with Special "Reflex" Alloy uprights at approx. 610mm C/lines. Single Rollers to top. 1" x 1" Alloy box section to each end for attachment to Alloy Doors. Pockets in bottom section of skins to accept plywood inserts. Baising components consisting of Plywood inserts supplied loose. Alloy Doors for each Curtain End. Door Seals. Single Rollers for Top & Bottom of Doors. Double Rollers for the Bottom of each upright. All packers as req. to Keep components in vertical plane.

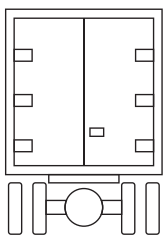
GENERAL

This KIT is of a fully welded construction all loose Parts cut to size

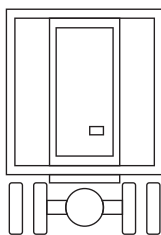
OPTIONS

The above specification is for Steel construction we also manufacture a BOLTED ALLOY Kit (details on request)

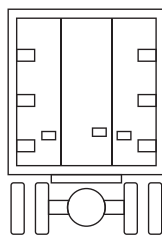
OPTIONS



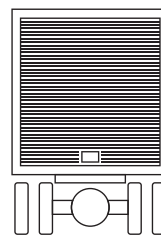
Double
Doors



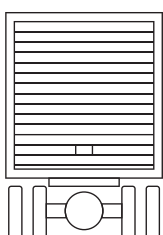
Single
Door



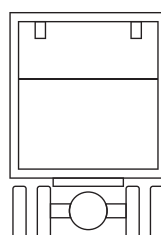
Three Leaf
Door



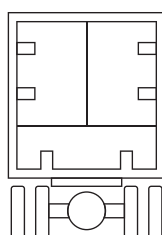
Narrow Latt
Shutter



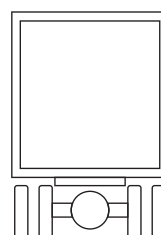
Wide Latt
Shutter



Lift Up
Flaps



Tail
Boards



Solid
Rear

CONSTRUCTION OPTIONS

ROOF

One piece aluminium or glass fibre

DOOR LOCKS

External or recessed, plated as standard Stainless Steel option, available on request

REAR FRAME

To accept Tail-Lift with rebated step to suit floor thickness.
This frame will accept any Tail-Lift

E: SALES@WORR.CO.UK

T: 0191 257 5011

W: WWW.WORR.CO.UK

LITTLE BEDFORD STREET,
NORTH SHIELDS, NE29 6NW, UK



Accredited Contractor
CHAS.co.uk

